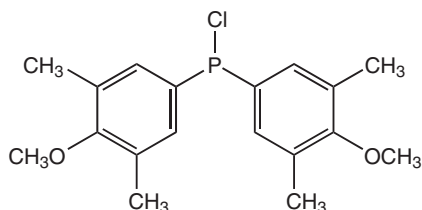


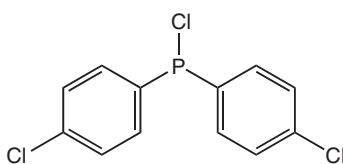
# Chlorophosphines

Ligands containing a trivalent phosphorus moiety are found in many catalytic systems.<sup>1</sup> Chlorophosphines provide a convenient route to introduce phosphorus into the ligand structure. Alfa Aesar offers a range of chlorophosphines to enable chemists to fine tune the properties of their catalysts.



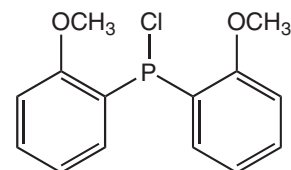
**H25884**

Chlorobis(3,5-dimethyl-4-methoxyphenyl)phosphine, 98+%  
[136802-85-2]



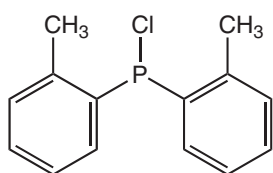
**H25886**

Chlorobis(4-chlorophenyl)phosphine, 98+%  
[13685-26-2]



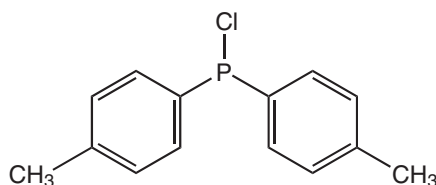
**H25894**

Chlorobis(2-methoxyphenyl)phosphine, 98+%  
[263369-88-6]



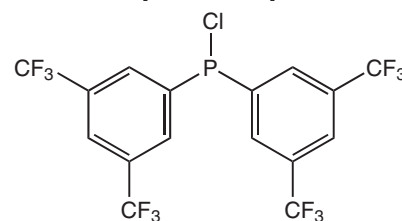
**H25890**

Chlorodi(o-tolyl)phosphine, 98%  
[36042-94-1]



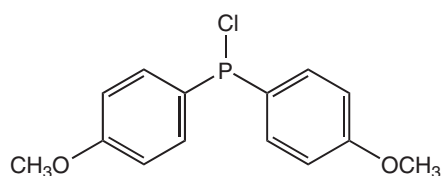
**H25889**

Chlorodi(p-tolyl)phosphine, 95%  
[1019-71-2]



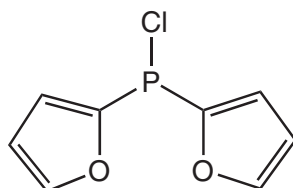
**H25883**

Chlorobis[3,5-bis(trifluoromethyl)phenyl]phosphine, 98+%  
[142421-57-6]



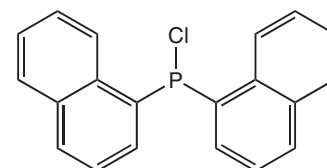
**H25887**

Chlorobis(4-methoxyphenyl)phosphine, 98+%  
[13685-30-8]



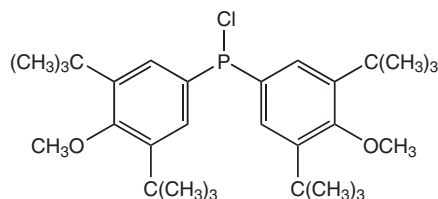
**H25892**

Chlorodi(2-furyl)phosphine, 98+%  
[181257-35-2]



**H25893**

Chlorodi(1-naphthyl)phosphine, 95%  
[36042-99-6]



**H25882**

Bis(3,5-di-tert-butyl-4-methoxyphenyl)chlorophosphine, 94%  
[212713-08-1]